



海洋垃圾調查記錄表

MARINE LITTER SURVEY RECORD SHEET



姓名 NAME: _____

班別 CLASS: _____

調查日期 DATE OF SURVEY: _____

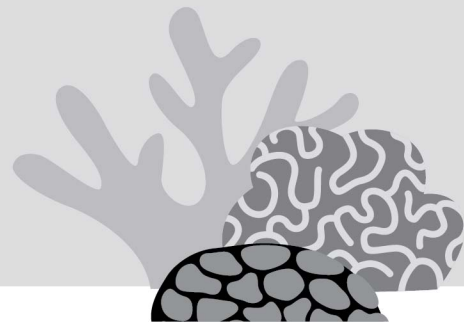
調查地點 LOCATION OF SURVEY: _____

計劃贊助
Project Sponsored by



海洋垃圾類別

WHAT IS MARINE LITTER?

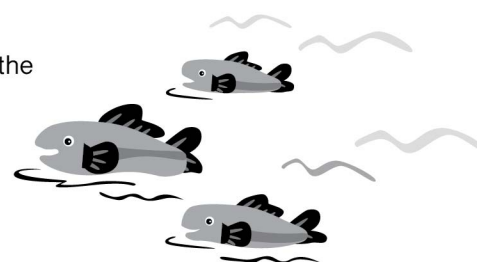


「海洋垃圾」是任何被廢棄於海洋環境裏的人造物品，不論是否有意被丟棄。

Marine litter can be defined as any man-made object that does not naturally occur in the marine or coastal environment but is found there as the result of being discarded.

請把你收集到的海洋垃圾分類及記錄其數量。

Please classify and record the marine litter you have collected.



(A) 即棄塑膠 SINGLE-USE PLASTICS

A1 膠樽蓋
Bottle caps



個 PCS

A2 飲品樽
Bottles



個 PCS

A3 膠袋
Plastic shopping bags



個 PCS

A4 外賣容器、蓋及杯
Food containers, lids and cups
(不包括發泡膠)
(NOT including polystyrene)



件 PCS

A5 餐具 Cutlery
(不包括發泡膠)
(NOT including polystyrene)



件 PCS

A6 飲管和攪拌棒
Straws / stirrers



支 PCS

A7 發泡膠 Polystyrene
(外賣容器、餐具、包裝物料及膠箱等)
(food containers, cutlery, packaging and boxes)



件 PCS

A8 其他塑膠(即棄)
Other single-used plastics



件 PCS

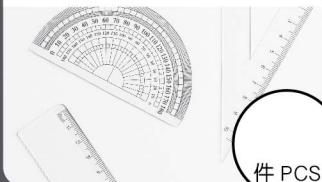
(B) 可重用塑膠 REUSABLE PLASTICS

B1 食物盒、餐具及水樽
Re-useable food containers, cutlery and bottles



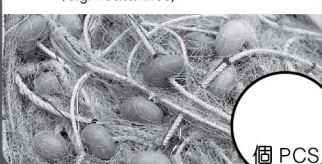
件 PCS

B2 玩具及文具
Toys and stationery



件 PCS

B3 漁網和漁具
Fishing nets and fishing items
(浮標及魚絲)
(e.g. floats/lines)



個 PCS

B4 其他塑膠(可重用)
Other plastic items



件 PCS

(C) 塑膠碎片 PLASTICS FRAGMENTS

C1 塑膠碎片 Plastics fragments
(塑膠製品被分裂成細小的碎片)
(Plastic fragments are small pieces of plastic that were previously part of a larger object)



粒 PCS

小知識 NOTES

塑膠碎片是形容由塑膠製品分裂而成的細小碎片，而膠粒則形容一些準備製成塑膠製品的原材料。

"Plastics fragments" are the small pieces that break up from large plastic litter, for example, by wave action. While "plastic pellets" are the raw materials, which will be mold to plastic product.

小總結 SUMMARY:

(A) 即棄塑膠 SINGLE-USE PLASTICS

A1+A2+A3+A4+A5+A6+A7+A8= _____ 件 PCS

(B) 可重用塑膠 REUSABLE PLASTICS:

B1+B2+B3+B4= _____ 件 PCS

(C) 塑膠碎片 PLASTICS FRAGMENTS

C1= _____ 件 PCS

塑膠 PLASTICS A+B+C= _____ 件 PCS

(D) 金屬 METAL

D1 鋁箔包裝 Foil packaging



件 PCS

D2 鋁罐 Aluminum Cans



個 PCS

D3 其他金屬 Other metal items



件 PCS

(E) 玻璃 GLASS

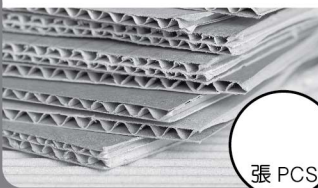
E1 飲品和食物樽 Drink bottles and food containers



個 PCS

(F) 紙 PAPER

F1 紙皮 Cardboard



張 PCS

F2 紙張(報紙、雜誌紙及辦公室紙) Paper (newspapers, magazines and office paper)



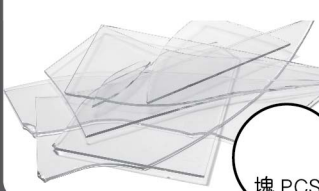
張 PCS

F3 其他紙 Other paper items



張 PCS

E2 玻璃碎片 Glass fragments



塊 PCS

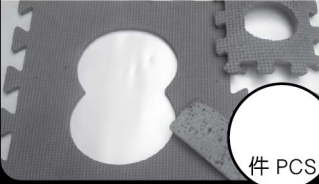
E3 其他玻璃 Other glass items



件 PCS

(G) 橡膠 RUBBER

G1 橡膠(橡筋、地蓆、輪胎等) Rubber (rubber bands, mats, wheels, etc.)



件 PCS

(H) 飲品盒 DRINK BOXES

H1 飲品盒(包裝牛奶、飲品等) Drink boxes



件 PCS

(I) 其他 OTHER

I1 大型垃圾 Oversized litter



件 PCS

I2 由多於一個物料混合而成 Mixed material items



件 PCS

I3 其他(木材、布料、陶器等) Other (wood, cloth, ceramics etc.)



件 PCS

小總結 SUMMARY:

(ABC) 塑膠 PLASTIC A+B+C= _____ 件 PCS

(D) 金屬 METAL D1+D2+D3= _____ 件 PCS

(E) 玻璃 GLASS E1+E2+E3= _____ 件 PCS

(F) 紙 PAPER F1+F2+F3= _____ 件 PCS

(G) 橡膠 RUBBER G1= _____ 件 PCS

(H) 飲品盒 DRINK BOXES H1= _____ 件 PCS

(I) 其他 OTHER I1+I2+I3= _____ 件 PCS

今天收集到海洋垃圾的數量
MARINE LITTER COLLECTED
= _____ 件 PCS

PERSONAL EQUIPMENT:

Cap / Hat

Backpack

Gloves

Sun protective clothing

Long Trousers

Close-toed shoes



A set of spare clothes



Pen or Pencil



Towel



Lunch / Snacks



1L water bottle



SunScreen



Insect repellent



Umbrella / Raincoat

TEAM EQUIPMENT:



Marine Litter Survey Record Sheet



Garbage bags



First aid kit



Buckets



Tongs

CODE OF CONDUCT:

- 1) Do not touch, feed, or disturb any wildlife and maintain a distance from wild animals. You can take photos.
- 2) Carefully choose your path and rest areas, and keep your voice low, to minimize any impact to wild animals.
- 3) Put the litter you collect in the appropriate recycling and/or rubbish bins, or designated areas selected by your teachers.
- 4) Reuse: please collect all the gloves and tools after the survey, clean and reuse them as many times as possible.

SAFETY GUIDELINES:

- 1) Be cautious with any debris or natural items of which you are unsure, never open any bottles you find or touch any animals.
- 2) Wear gloves during the entire survey, be careful of sharp objects, like broken glasses.
- 3) Be careful when attempting to remove over-sized litter, leave it if the items are too heavy and bulky.
- 4) Keep monitoring the weather conditions before and during the survey, make sure to keep hydrated and avoid extended expose to sunlight. Stop the survey and stay in a safe location if adverse conditions occur.

QUESTIONS:

1

Refer to the summary on page 2. Which categories of plastics have you collected the most of? Why?

2

Refer to the summary on page 3, which categories of marine litter have you collected most of? Why?

3

Why do you think the litter ends up at the beach?

4

Do you think all the marine litter you found today comes from Hong Kong? If not, how did it get to Hong Kong?

5

Do you think marine litter will affect wildlife?

6

What can you do to reduce marine litter? Please share a few examples.



Enquiries:

Phone: 2526-1011 (press 5 after selecting the language)
Email: education@wwf.org.hk



Online resource bank:

WWF has established an online resource bank to aid teachers as they prepare lessons related to marine litter. We encourage all teachers to assess these resources at: www.wwf.org.hk/edu_resources_eng



Find out more about WWF's primary school education programme: www.wwf.org.hk/primaryprog_eng